



FieldBus Connectivity for UMAC

Accessory 72E FieldBus Gateway

This accessory allows the UMAC Turbo system to communicate with other external devices using a variety of field bus communication protocols like DeviceNet, Profibus, CanOpen and ControlNet as required. This board can act as a master or a slave in the field bus connections. The specific option must be ordered to specify the type of field bus communication required. The control Net Option only supports the slave mode.

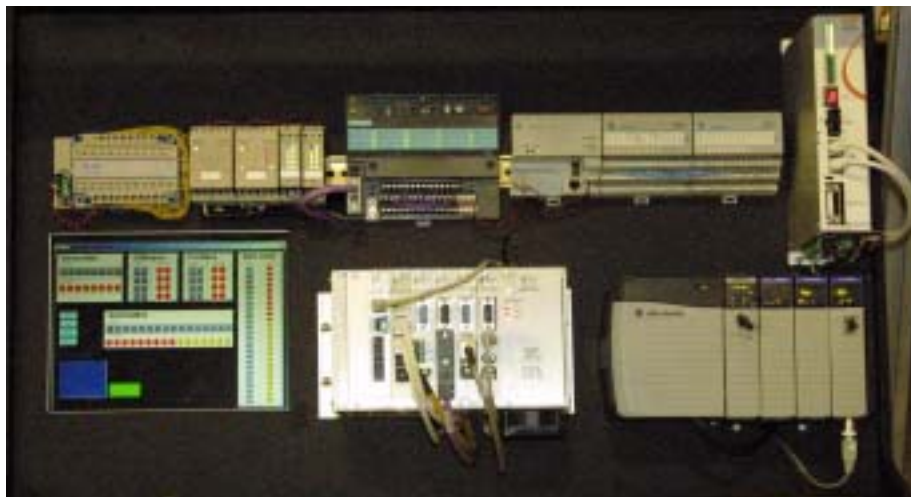
Accessory 5E Macro Interface

The ACC-5E board in addition to the MACRO interface, provides a UMAC Turbo system with the same ports that are present along the top of a PC-bus PMAC2, or out the front of a VME-bus PMAC2: the JDISP display port, the JTHW multiplexer port, the JIO general-purpose I/O port, and the JHW handwheel port. The JHW handwheel port includes two complete quadrature encoder inputs. Optionally, this accessory can also provide a 16 or 32-node MACRO-ring interface. This allows a UMAC Turbo to communicate to other UMAC MACRO even at great distances from it.

ACC-5E connects to the CPU board through the UBUS backplane expansion port. One of the uses of this accessory is to link a UMAC Turbo system to a UMAC MACRO system to control a large number of motors. For example, in order to control a total of 32 axes and several I/O points, a UMAC Turbo system and a UMAC MACRO system are tied together in a fiber optic MACRO link.

UMAC

The UMAC (Universal Motion and Automation Controller) is a modular PMAC system built with a set of 3U-format Eurocards. The configuration of any UMAC system starts with the selection of the PMAC PCU or MACRO fiber optic interface and continues with the addition of the necessary axes boards, I/O boards, communication interfaces (USB, Ethernet, etc.) and any other interface boards selected from the rich variety of available accessories. For example, accessory boards interface with virtually any kind of feedback sensor or to implement almost any kind of communication method with the host computer or external devices.



Fieldbus Demo

Fieldbus Connectivity For UMAC



DeviceNet

CANopen

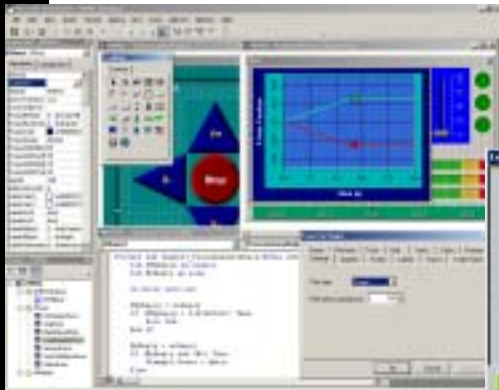
ControlNet™

ACC 72E FieldBus Gateway

ACC 5E MACRO Interface



Controlled by UMAC



PMAC HMI



DELTA TAU
Data Systems, Inc.

Single Source Machine Control

Power // Flexibility // Ease of Use

21314 Lassen Street Chatsworth, CA 91311 / Tel. (818) 998-2095 Fax. (818) 998-7807 / www.deltatau.com