



## UMAC Controlling Multiple Motor Types

One of the advantages of Delta Tau motion control products, is that they have been designed to control virtually any type of motor and actuator. This flexibility requires the ability to accept a vast array of feedback devices. In addition, the flexibility of the motion control to tune for various types of motor and load configurations, gives the user the confidence that they can rely on Delta Tau to solve multi-axis motion control applications that include multiple motor and feedback technologies. This demo incorporates two different motor technologies, conventional brushless servo motors and linear Thrust Tube motors from Copley Controls.

The demo also incorporates the PMAC HMI program. PMAC HMI plots the position of the linear motors and displays a graphical representation of the Delta Tau logo. The speed of data transfer is impressive via the USB II link between the PC and the UMAC.

### UMAC

- Up to 32 axes of motion control
- Analog  $\pm 10V$ , direct digital PWM or pulse and direction (stepper) command signals
- Quadrature, incremental, encoder inputs
- Analog feedback inputs
- Sinusoidal encoder feedback input with 4096 interpolation lines
- SSI encoders inputs
- Yaskawa or Mitsubishi absolute encoders inputs
- 16-bit resolver-to-digital converter inputs
- MLDTs feedback inputs
- Thousands of I/O points
- High-Power, sinking, sourcing or OPTO-22 compatible I/O
- Up to 256 analog-to-digital converted inputs (12-bits or 16-bits resolution)
- Stand-alone or host commanded operation
- PC/104, USB, Ethernet or RS-232/422 communication methods supported
- DeviceNet and Profibus protocols supported



UMAC



3U AMP

### 3U Amp

The Delta Tau series of compact and high power 3U Format Amplifiers is a convenient line for stand-alone use or for installation inside a UMAC Rack. These amplifiers are provided with one or two axes, current ratings from 4 to 20Amp continuous and 30 to 230 V.A.C. bus voltages for a wide selection of models. In addition, backplanes for the connections of the amplifier outputs and power supplies are also available for installation inside a rack.

### PHMI Software Features

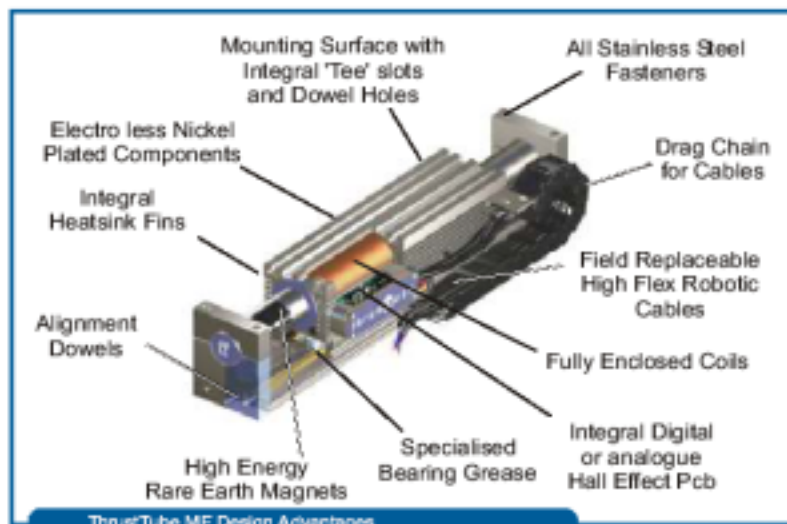
- Rapid Operator Interface Development Environment for creating a machine controller.
- Uses ActiveX graphical objects including buttons, indicators, strip charts, bar graphics, gages and sliders.
- Allows users to create professional looking multi-axis motion applications with minimal time and effort.
- Operates on Windows 98, XP, 2000, NT.



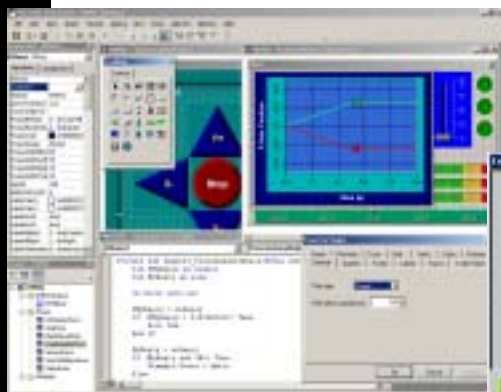
PMAC HMI

# Linear Motor Control

## ThrustTube Modules



Controlled by UMAC



PMAC HMI



**DELTA TAU**  
Data Systems, Inc.

*Single Source Machine Control*

*Power // Flexibility // Ease of Use*

21314 Lassen Street Chatsworth, CA 91311 / Tel. (818) 998-2095 Fax. (818) 998-7807 / [www.deltatau.com](http://www.deltatau.com)